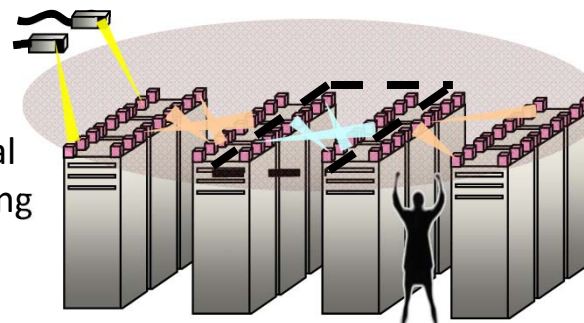




IBM Japan, Ltd.

IBM Research - Tokyo in Shin-kawasaki

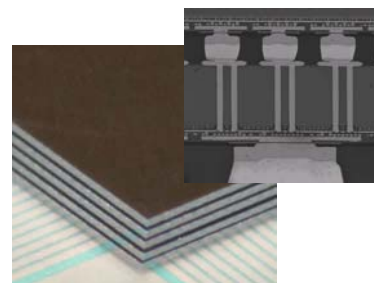
IBM Research – Tokyo joined The University of Tokyo social cooperation program to conduct a joint research by utilizing nano micro technology with School of Engineering, The University of Tokyo and Kawasaki City. The topic is “Next generation nano-micro devices and systems for energy-efficient information processing.” Based on 3D integrated device, optical interconnect, and wireless interconnect technology, we are conducting energy-saving information processing research and development which will contribute to help solve energy savings global issue and a creation of a recycling society.



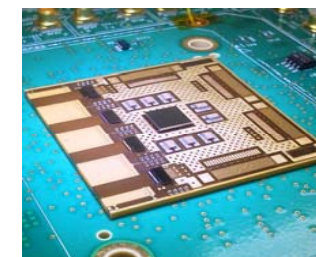
Wireless interconnect



Next-generation Computing method



3D integrated device



Optical interconnect

NANOBI, Room 1001, Manufacturing